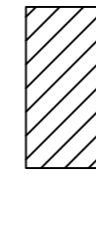

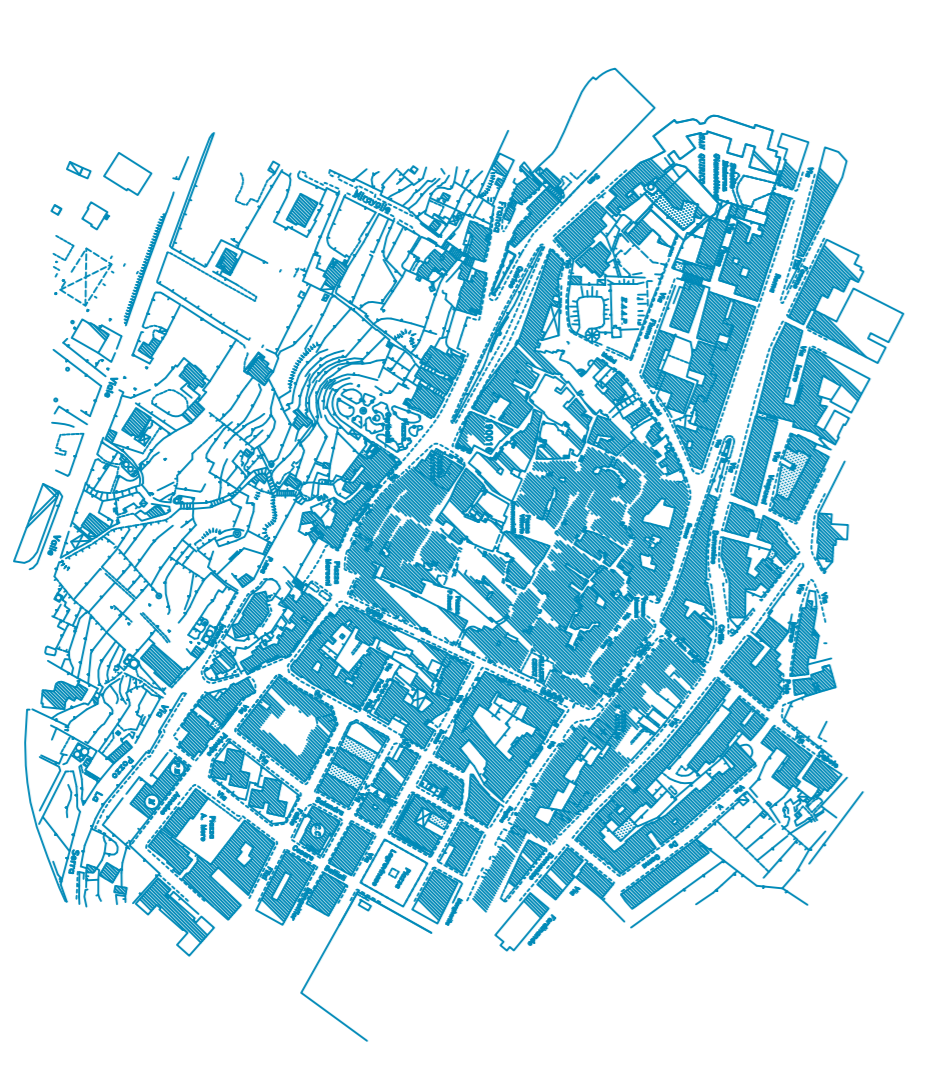
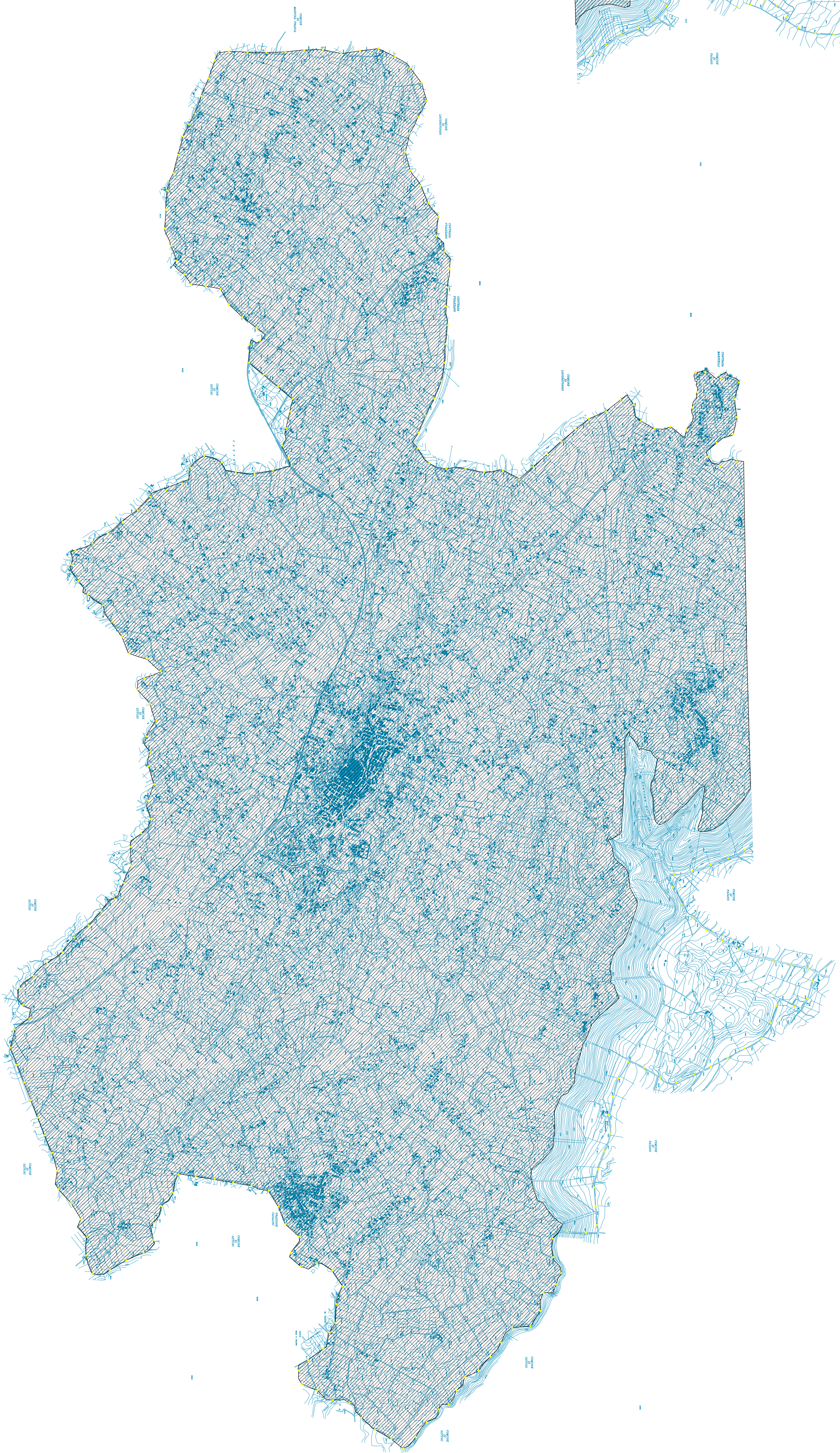


### LEGENDA

-  ZONA TRULLI
-  TERRITORIO COMUNALE



# COMUNE DI CISTERMINO

(PROVINCIA DI BRINDISI)

## PIANO REGOLATORE GENERALE

PROGETTISTA: ARCH. GIAN LUIGI CONSALÉS  
COLLABORATORE: ARCH. SIMONA ANELLI

TAV. ① 2 3 4 5 6 7 8

ADEGUAMENTO AL P.U.T.T./P.  
ZONA TRULLI

RAPEP: 1:10.000